

Silicon Software Framegrabber Setup

- [Before installation](#)
- [Download the correct installer](#)
- [Installing Silicon Software](#)
- [Activating Applets](#)
- [Verify installation](#)
- [Before installation](#)
- [Download the correct installer](#)
- [Installing Silicon Software](#)
- [Activating Applets](#)
- [Verify installation](#)

Perception Park software supports the usage of Silicon Software framegrabbers to be used with Camera Link cameras. However, the installation of Silicon Software drivers and software has do be done correctly to get it to work. This article goes through the installation process.



Be aware that having both Silicon Software and Teledyne DALSA framegrabbers on one machine is not possible as their drivers/software will interfere with each other. Thus both components will usually be rendered non-functional until one of them is uninstalled again.

A Silicon Software framegrabber can only be used after uninstalling Teledyne DALSA software from the machine.

Before installation

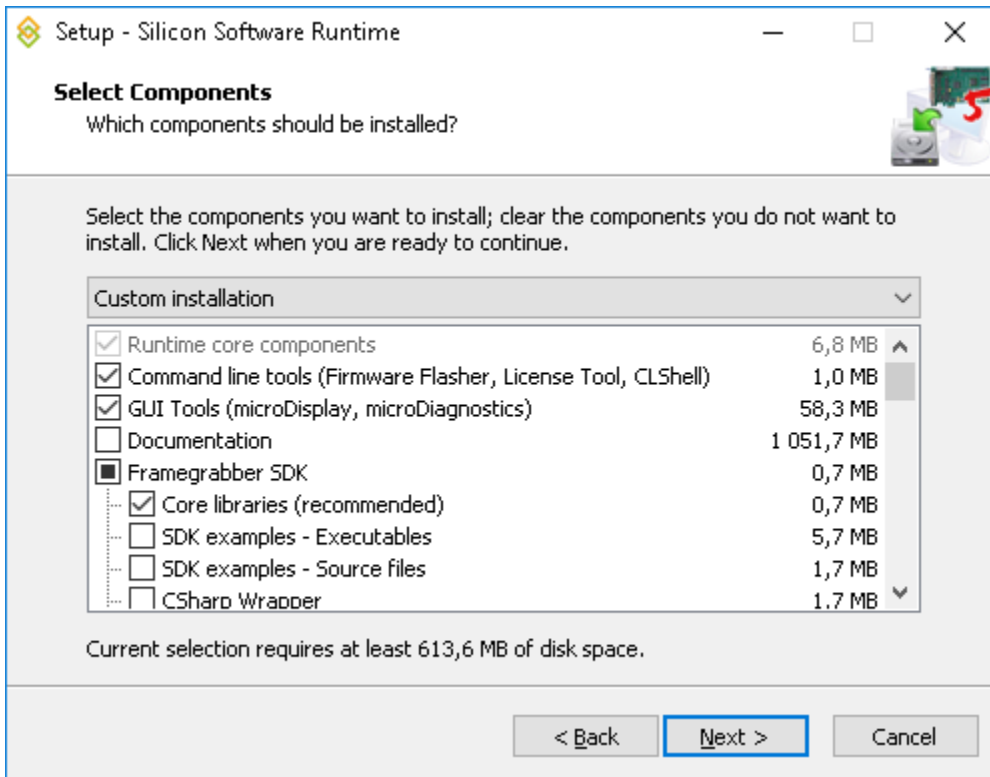
It is highly recommended to uninstall all previous Silicon Software products from the machine. When doing so, the uninstall process might say that not all files could be removed. In this case you can delete the left files manually by going to "**C:\Program Files\SiliconSoftware**" and "**C:\ProgramData\SiliconSoftware**" and delete everything that is left inside those folders.

Download the correct installer

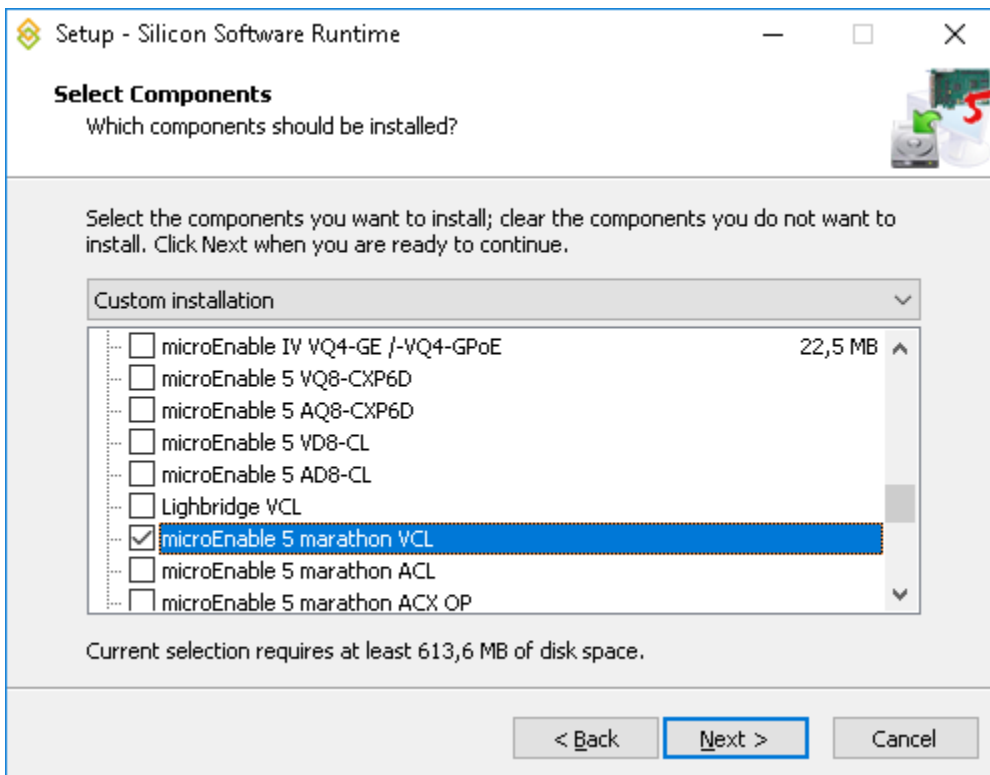
Perception Park software supports the Silicon Software Framegrabber "**microEnable 5 marathon deepVCL**". Go to its product page (<https://silicon.software/product/microenable-5-marathon-deepvcl>) and go to "**Downloads**". Here open up "**Complete Installations**" and search for "**RuntimeSetup v5.5.1 (Win64) with Applets**" for x64 systems or "**RuntimeSetup v5.5.1 (Win32) with Applets**" for x86 systems and download the installer. Once downloaded start the installer.

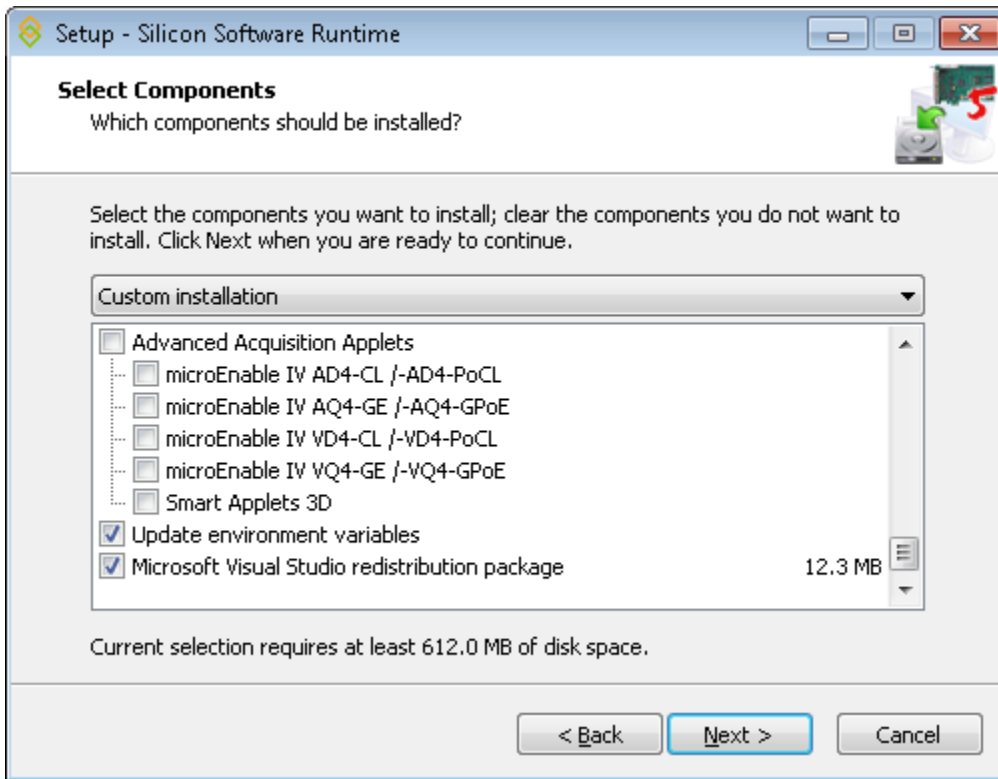
Installing Silicon Software

When running the installer you will be asked which features to install. The following images show which features are needed to be checked.



Note that the "Core Libraries" are not needed and can be skipped in case there are any problems with the camera connection.

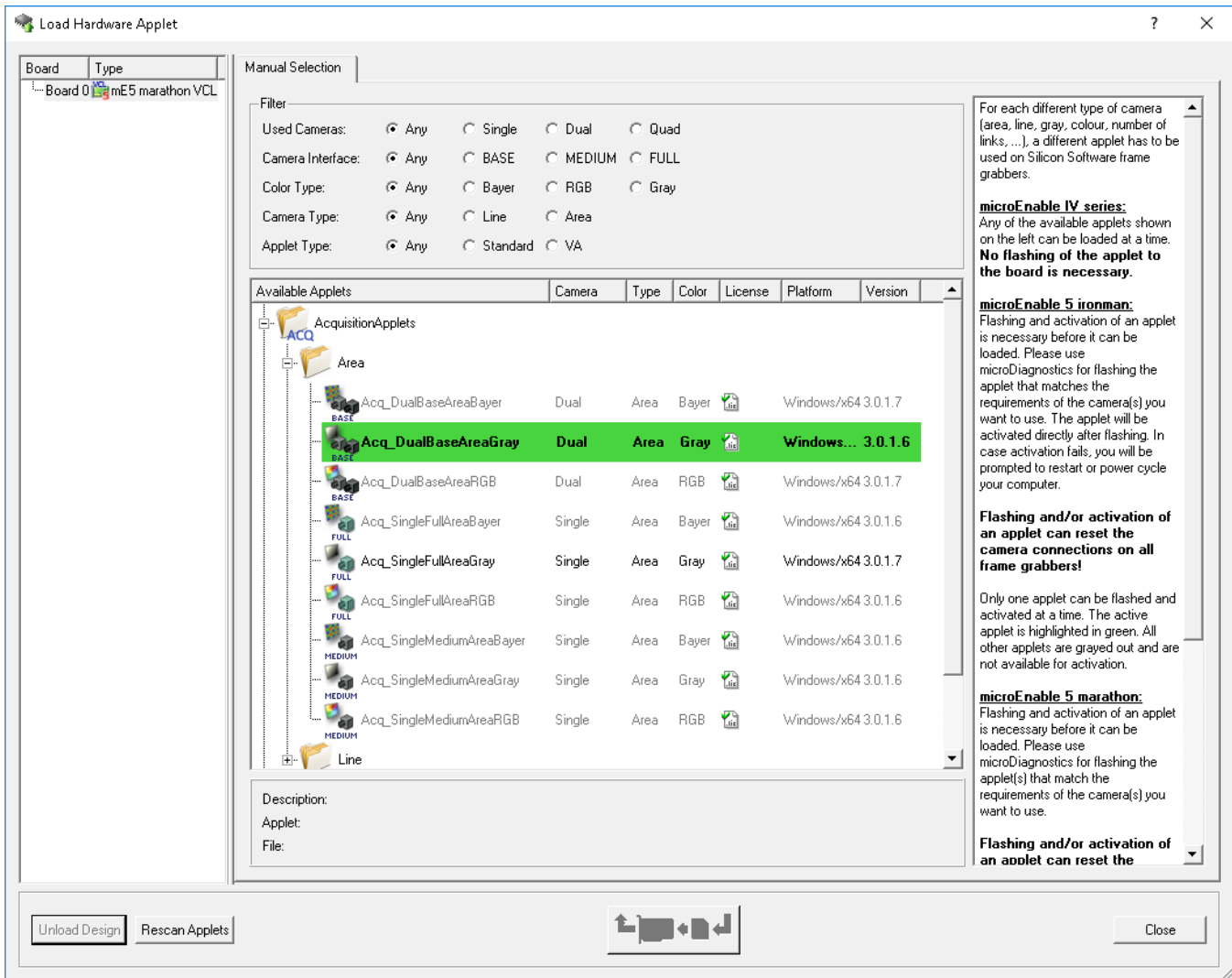




Then click next until installation process starts and wait until it has finished.

Activating Applets

After installation, the Silicon Software applet "**Acq_DualBaseAreaGray**" has to be enabled for the framegrabber, otherwise it will not work. To do this, open up Silicon Software's **microDisplay** and go to **FileLoad Applet**.



Note that to activate the applet, the applet needs to be selected from the list, then hit the button in the bottom center (it should display a color schematics of the grabber if the applet is not yet installed)

Verify installation

Now, if you go to the installed software in your Windows control panel, it should list the following items.

Silicon Software mE5 Setup_mE5-MA-VCL Applets 2.0	Silicon Software GmbH	11/4/2019	323 MB	2.0
Silicon Software Runtime 5.5.1_68121	Silicon Software GmbH	11/4/2019	613 MB	5.5.1_68121
Windows Driver Package - Silicon Software GmbH microEnable 5 Driver (07/24/2017 1.2.1.0)	Silicon Software GmbH	11/4/2019		07/24/2017 1.2.1.0
Windows Driver Package - Silicon Software GmbH microEnable IV Driver (04/07/2017 4.3.0.0)	Silicon Software GmbH	11/4/2019		04/07/2017 4.3.0.0

Now the device is ready to be used.

- [Before installation](#)
- [Download the correct installer](#)
- [Installing Silicon Software](#)
- [Activating Applets](#)
- [Verify installation](#)
- [Before installation](#)
- [Download the correct installer](#)
- [Installing Silicon Software](#)
- [Activating Applets](#)
- [Verify installation](#)

Perception Park software supports the usage of Silicon Software framegrabbers to be used with Camera Link cameras. However, the installation of Silicon Software drivers and software has to be done correctly to get it to work. This article goes through the installation process.



Be aware that having both Silicon Software and Teledyne DALSA framegrabbers on one machine is not possible as their drivers/software will interfere with each other. Thus both components will usually be rendered non-functional until one of them is uninstalled again.

A Silicon Software framegrabber can only be used after uninstalling Teledyne DALSA software from the machine.

Before installation

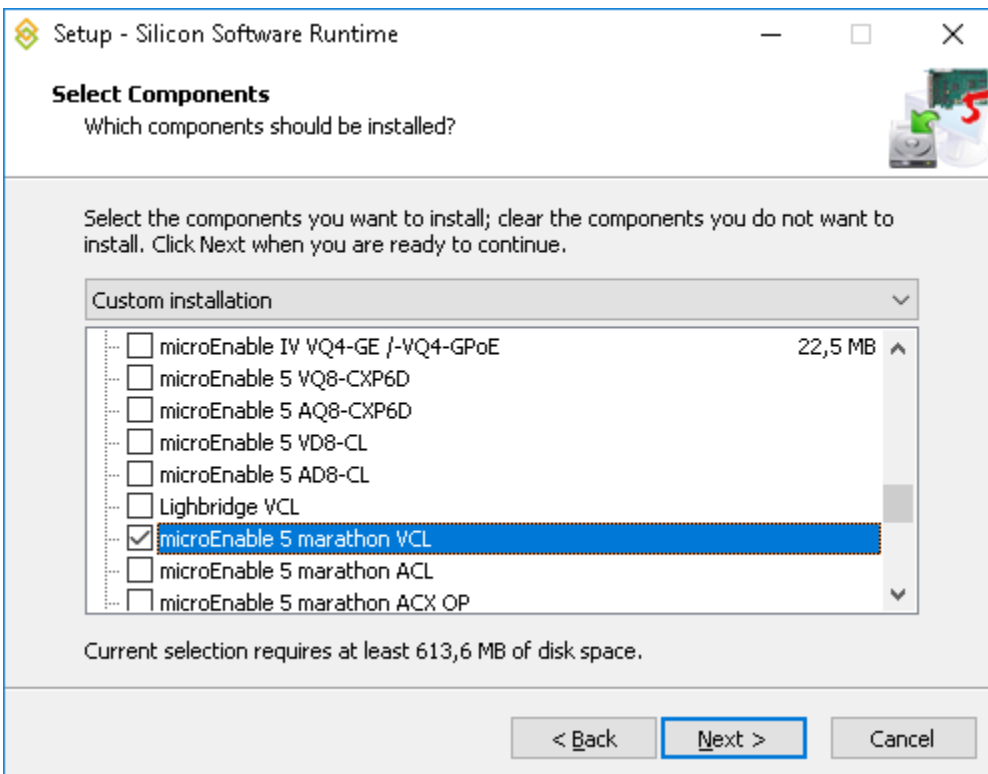
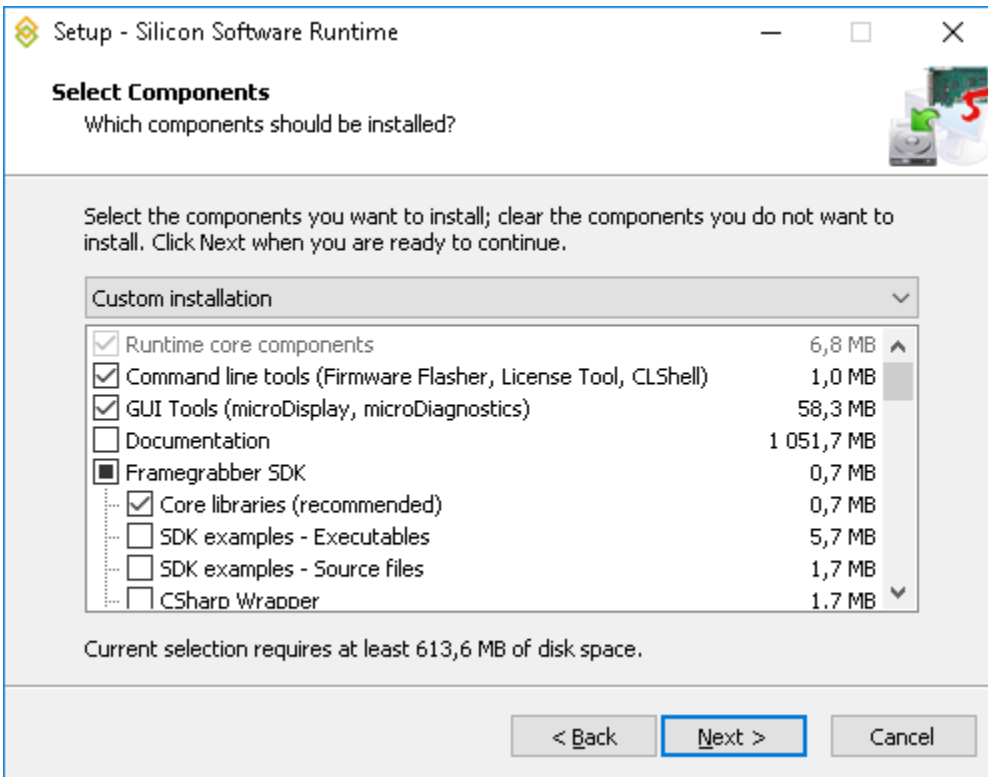
It is highly recommended to uninstall all previous Silicon Software products from the machine. When doing so, the uninstall process might say that not all files could be removed. In this case you can delete the left files manually by going to "**C:\Program Files\SiliconSoftware**" and "**C:\ProgramData\SiliconSoftware**" and delete everything that is left inside those folders.

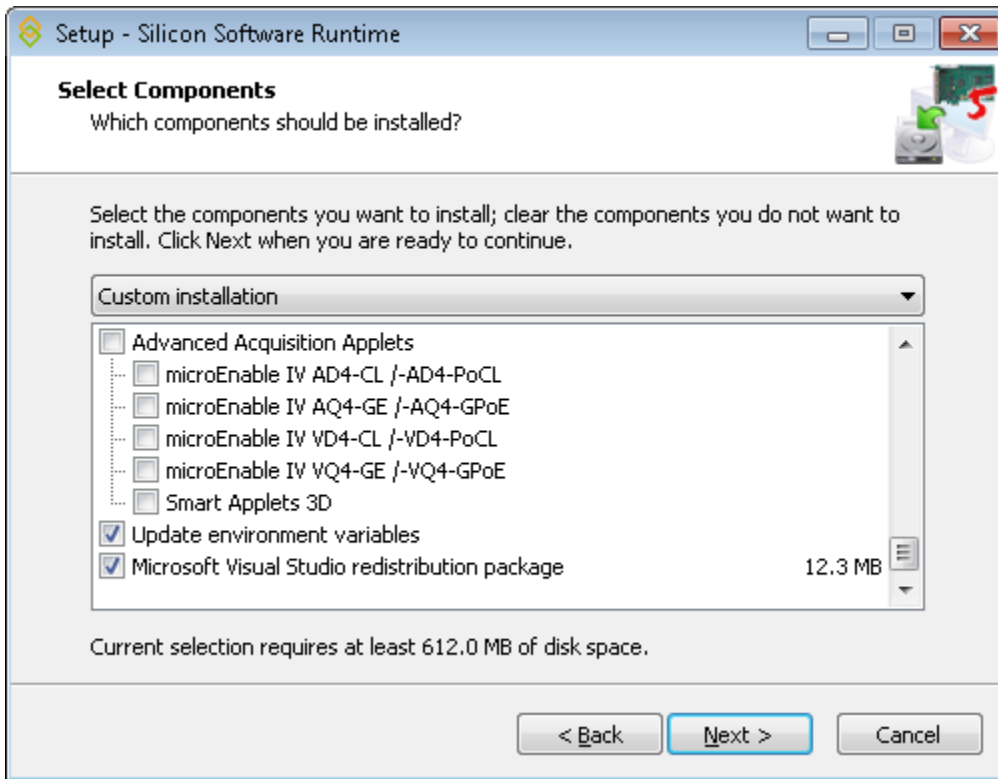
Download the correct installer

Perception Park software supports the Silicon Software Framegrabber "**microEnable 5 marathon deepVCL**". Go to its product page (<https://silicon.software/product/microenable-5-marathon-deepvcl>) and go to "**Downloads**". Here open up "**Complete Installations**" and search for "**RuntimeSetup v5.5.1 (Win64) with Applets**" for x64 systems or "**RuntimeSetup v5.5.1 (Win32) with Applets**" for x86 systems and download the installer. Once downloaded start the installer.

Installing Silicon Software

When running the installer you will be asked which features to install. The following images show which features are needed to be checked.

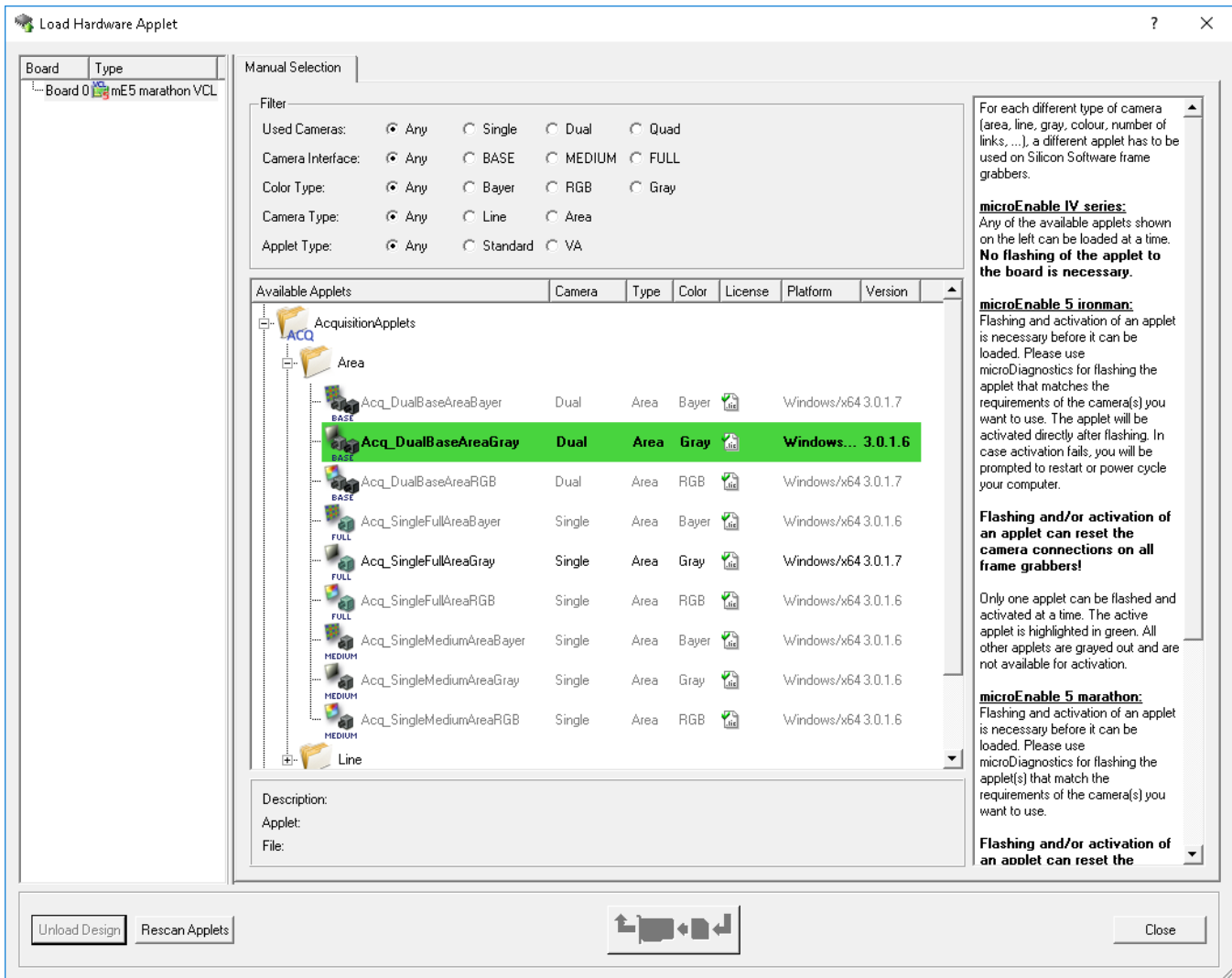




Then click next until installation process starts and wait until it has finished.

Activating Applets

After installation, the Silicon Software applet "**Acq_DualBaseAreaGray**" has to be enabled for the framegrabber, otherwise it will not work. To do this, open up Silicon Software's **microDisplay** and go to **FileLoad Applet**.



Note that to activate the applet, the applet needs to be selected from the list, then hit the button in the bottom center (it should display a color schematics of the grabber if the applet is not yet installed)

Verify installation

Now, if you go to the installed software in your Windows control panel, it should list the following items.

Silicon Software mE5 Setup_mE5-MA-VCL Applets 2.0	Silicon Software GmbH	11/4/2019	323 MB	2.0
Silicon Software Runtime 5.5.1_68121	Silicon Software GmbH	11/4/2019	613 MB	5.5.1_68121
Windows Driver Package - Silicon Software GmbH microEnable 5 Driver (07/24/2017 1.2.1.0)	Silicon Software GmbH	11/4/2019		07/24/2017 1.2.1.0
Windows Driver Package - Silicon Software GmbH microEnable IV Driver (04/07/2017 4.3.0.0)	Silicon Software GmbH	11/4/2019		04/07/2017 4.3.0.0

Now the device is ready to be used.